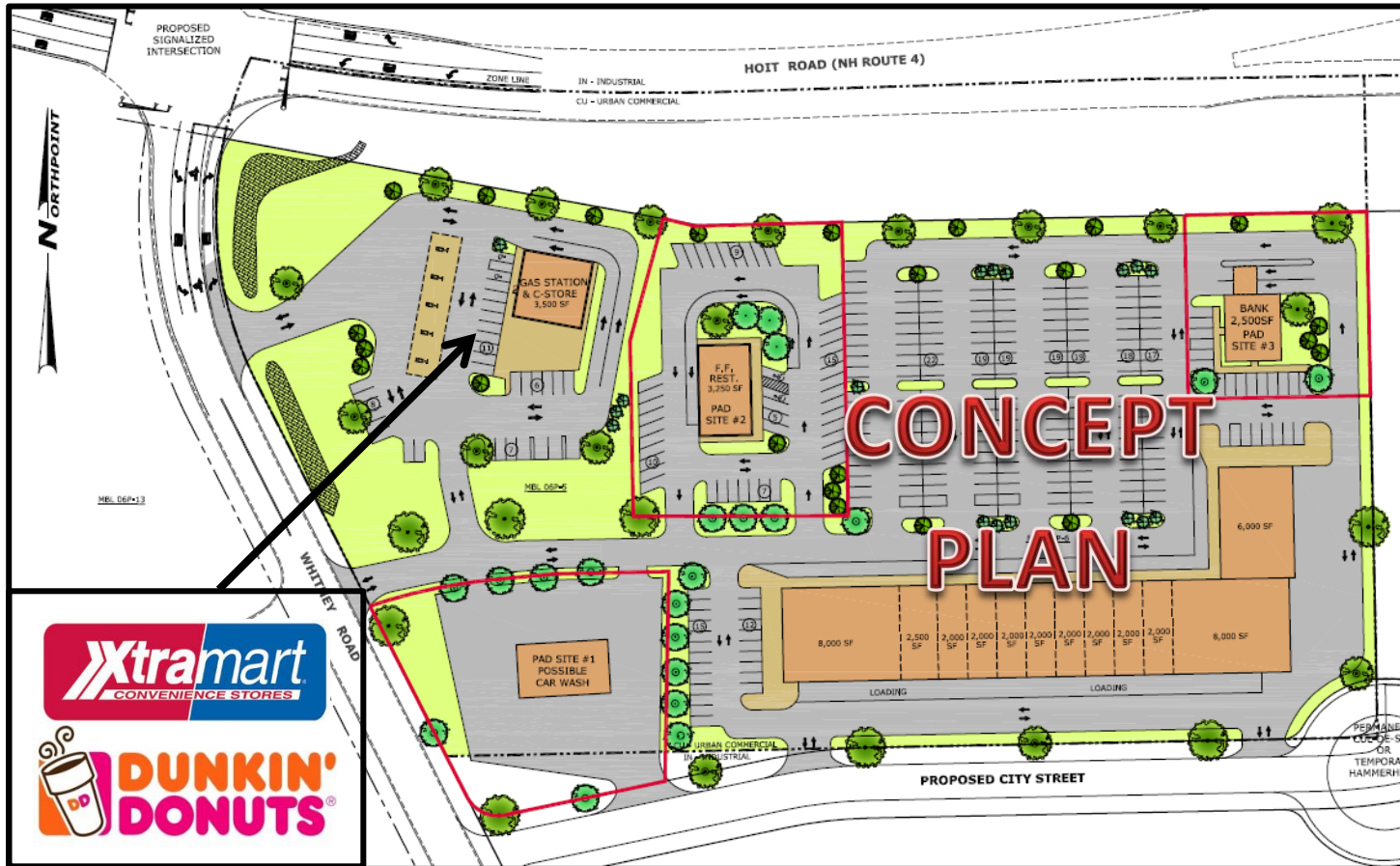


# INTERSTATE RETAIL DEVELOPMENT PAD SITES FOR LEASE

**JOIN XTRA MART / DUNKIN DONUTS / MOBIL GAS: NOW OPEN!**

## ***I-93 EXIT 17***



- Concord, NH
- Municipal Water & Sewer
- 22,500 VPD on Route 4 and abutting roads
- 45,000 VPD on abutting I-93
- 2,500± vehicles peak hour count
- Call (603) 783-0400  
Interchange Development



### **CONCORD CROSSING II**

Easy on/off location perfect for:  
**Fast-food restaurants with drive-through**  
**Branch bank location**  
**Car wash**  
**Auto parts**  
**Discount store**